

Up To Date

COVID-19 Limited Hours

During this time, our hours of operation will be 7:00 to 3:30.

Sigler Club

It's not too late to place a fall Sigler Club order to boost your rewards.

2021 Calendars

The 2021 wall/desk calendars are now available. Pick one up or ask to have one sent with your next order.

Upcoming Closures

South San Francisco will be closed for inventory on 12/3 @ 3:00 and on 12/4. All Sigler Wholesale Distributors locations will be closed at 11:30 on 12/24 and 12/31 and all day on 12/25 and 1/1. Merry Christmas and Happy New Year!

Co-Op Deadline

All eligible co-op advertising claims must be submitted by January 15, 2021.



What's New on SiglerTV

- 40MBAA Fan Coil (6 videos)
- New Wired Controller (2 videos)
- Ductless Product Overview
- Ductless Opportunities

A new wrap on the Sigler Wholesale Distributors delivery trucks

Line Set Connections Without Torches

Are you still using a torch to make lineset connections? Why? Sigler Wholesale Distributors now stocks two brands of braze-free connectors that offer an easier solution that won't leak.

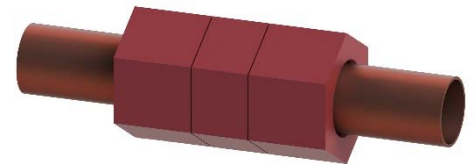
PRO-Fit by Rectorseal



PRO-Fit Quick Connect fittings are designed to connect refrigerant lines without an open flame, brazing, or swaging. They are suitable for joining refrigerant lines in seconds after three easy steps. Cut the tube, deburr the ends and push them into the specially designed brass fittings. Double O-rings create an airtight seal up to 870 psi. These fitting are UV resistant, corrosion resistant and compatible with all major refrigerants.

Sigler Wholesale Distributors stocks a variety of fitting types in a variety of sizes. This includes unions, elbows, reducers, elbow reducers, sockets and valves.

SmartLock



SmartLock fittings provide a leak-free connection without a flame, nitrogen purge or special tools. With two crescent wrenches, the fitting drives a metal ferrule into the tube to create a metal-on-metal seal. The pressure and temperature ratings are based on the copper tube itself, not a gasket. The SmartLock fitting can be installed on either copper or aluminum tubing.

Sigler Wholesale Distributors stocks a variety of fitting types in a variety of sizes. This includes swage unions, flare connectors, straight unions, union reducers and elbow unions.

Regardless of which fitting family you choose, turn to Sigler Wholesale Distributors for linesets, lineset covers and everything else you need for one-stop shopping.

Sigler

Wholesale Distributors

THE PRODUCTS YOU NEED
THE VALUE YOU DESERVE

Concord

1920 Mark Court, #100

p - 925.825.1540

e - CNCorders@siglers.com

Jimmy Hilton x8504

Steven Anello x8509

Catie Bier x8516

Tim Haffner x8513

Eric Lynds x8502

Steve Moorhead x8501

Linda Randall x8311

Adonis Segrove x8407

Adam Winship x8512

San Jose

1070 Commercial St, #106

p - 408.453.3300

e - SAJorders@siglers.com

AJ Brantley x8522

Taylor Abernathy x8321

Joseph Bautista x8309

Neena Flores x8327

Mike Ha x8305

Denise Jarquin x8346

Ann Martinez x8329

Elly Moreno x8320

Timmy Ton x8339

Pilar Zavaleta x8304

South San Francisco

229 Littlefield Avenue, #4

p - 415.330.6600

e - SSForders@siglers.com

Debbie Russitano x8412

Pete Martinez x8406

Tricia Maychrowitz x8404

Regional Manager

Jon Malkovich x8500

Technical Support

Pat Burke x8334

Greg Sanchez x8405

Marketing

Lauren Ray x7292

Credit & Accounting

Vanessa Cas. (a-q) x5158

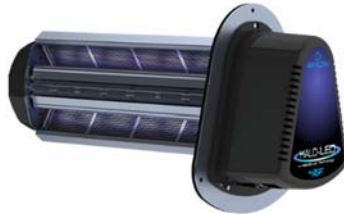
Brenda Habben (r-z) x5326

Featured Products



The REME HALO-LED is the industry's first LED in-duct, whole home and building air purification system that is both mercury free and zero ozone compliant. The HALO-LED proactively treats every cubic inch of air conditioned space, reducing airborne and surface contaminants and pollutants through bi-polar ionization and revolutionary, patent pending, REME-LED technology.

The HALO-LED is powered by a supplied 24V transformer. When installed with furnaces using EAC terminals, the transformer can be connected directly to the terminals to ensure it only runs when the fan is running. When installed with furnaces or fan coils without EAC terminals, an accessory air sensing kit, HLED-AS, is required.



Sigler Wholesale Distributors is proud to stock sheet metal components made by Air Duct Products. ADP has been in business for over thirty years. Originally located in Fullerton, the manufacturing facility continues to grow as larger, advanced equipment is acquired and better manufacturing is developed. Now located in Corona, Ca. – their 8 acre facility strives to create the highest quality product and meet all shipping needs.

While ADP is committed to providing quality products, Sigler Wholesale Distributors is committed to having the items you need with market competitive pricing. Check out the pricing and inventory on alumaflex, spiral pipe, elbows, wyes, collars, dampers, ceiling boxes, register boxes, drain pans, wall caps, flat stock and more. Additionally custom products are available with lead times often less than a week. ADP has a full design staff who can help assist with drawings to transform your sketches into a finished product.

Technical Tips

Q: What do you get when you combine a furnace with a mini-split heat pump?

You get a variable capacity, dual fuel, hybrid system with your choice of 24 volt wall control. It's official! Demand for compact, high efficient, and quiet systems has produced this new family of AHRI approved combinations.

The handshake between these historically separate machines takes place in the KSAIC301230 interface kit. This device allows six different scenarios for 24 volt electromechanical thermostat control of an inverter driven compressor. Installation instructions for the furnace/mini split hybrid procedure is described as "Scenario Six" in the newest manual for the kit, [Catalog No. IM-KSAIC03-04](#).

Because the EXV is in the outdoor unit, approved Carrier evaporator coils need to have their TXV removed. Because of this, both refrigerant lines need to be insulated and matched to the outdoor unit pipe diameter. The interface kit instructions also include the indoor blower settings for the approved furnaces. The interface transformer will need to be removed as the thermostat will use the furnace power. A field installed SPST relay is needed and explained in the interface manual for dual fuel. Follow the outdoor manual for refrigerant charging procedures. Scenario Six requires at least four installation manuals, so study before the test!