

## Up To Date

### Spring Training

Several classes are still on the calendar. You can still register online at [SiglerNorCal.com/training](http://SiglerNorCal.com/training).

### Customer Appreciation

The annual customer appreciation events are here! Don't miss out on the great food and several product vendors:

- San Jose:  
Thursday, May 2
- South San Francisco:  
Wednesday, May 8
- Concord:  
Wednesday, May 15
- Santa Rosa:  
Wednesday, May 22

### Comfortably California

Active Temperature Tough and Temperature Tough Gold dealers may file rebate claims for heat pump replacement jobs (\$170/ton) and high efficiency furnace changeouts (\$0.90/Mbtuh).

### Memorial Day

All stores will be closed on Monday, May 27.



Image by FINTAN O'BRIEN from Pixabay

## What's New on SiglerTV

Infinity Service & Install (6 videos)  
Ultra Low NOx Furnace Class

A Keel-Billed Toucan photographed in Costa Rica

## 2025 Costa Rica Incentive Trip

The Westin Reserva Conchal is an all inclusive resort and spa set between the exotic forests and unspoiled beaches of Costa Rica's North Pacific Riviera. Experience the "Pura Vida" lifestyle by balancing a soothing escape with local adventures. In 2018 Sigler Wholesale Distributors hosted an incentive trip at this amazing resort and are thrilled to be going back in 2025!

With more than 2400 acres on property, you will have everything you need to thrive in Costa Rica, including close proximity to a turquoise water beach, one of the largest freshwater pools in Central America, a Westin fitness studio, tennis courts and a championship golf course. Couple that with world class Mexican, Asian fusion, local Costa Rican and Northern Italian cuisine, and this will be a trip you do not want to miss!

Participants from Northern California will fly from SFO or SMF in two waves. The trip for wave 1 will be February 28 through March 6, while the second wave will be one day later on March 1 through 7. The cost per couple is only \$8500 or \$5700 for

a single guest. Remember, this can be completely offset by accumulating points every time you buy equipment, parts and supplies from Sigler Wholesale Distributors. Active program dealers can also pre-purchase points at a great discount. This makes the trip very affordable for dealers of any size to join in the fun!

Registration for the trip will be a two-step process this year. The dealer principal starts by logging-in at [www.Siglers.com](http://www.Siglers.com) and then clicks on "Marketing Programs" and finally "Incentive Trip." After completing the form, they will receive an invitation to create an account at [www.ICMtravel.com](http://www.ICMtravel.com).

Once inside the [www.ICMtravel.com](http://www.ICMtravel.com) account, additional guests can be invited to the trip. Don't forget to invite your spouse who will need a separate account, but also any other participants from the company. Each guest will complete their own registration and indicate if there is any interest in upgraded flights and/or rooms. If you have any troubles, be sure to ask your territory manager for help.

For more information, check out [www.SiglerNorCal.com](http://www.SiglerNorCal.com)

### Concord

1920 Mark Court, #100  
p - 925.825.1540  
e - CNCorders@siglers.com

Jimmy Hilton x8504  
Steven Anello x8509  
Tim Benjamin x8530  
Steve Moorhead x8501  
Josh Parrish x8517  
Alyssa Piler x8506  
Linda Randall x8311  
Adam Winship x8512

### San Jose

2390 Zanker Road  
p - 408.453.3300  
e - SAJorders@siglers.com

AJ Brantley x8522  
Taylor Abernathy x8321  
Alicia Alvarez x7568  
Alex Aguayo x5386  
Joseph Bautista x8309  
Neena Flores x8327  
Mike Ha x8305  
Denise Jarquin x8346  
Ann Martinez x8329  
Elly Moreno x8320  
Mario Sanchez x8328  
Timmy Ton x8339  
Wendy Torres x8352  
Deanna Williams x8324  
Pilar Zavaleta x8304

### Santa Rosa

256 Sutton Place, #104  
p - 707.361.7600  
e - STRorders@siglers.com

Adonis Segrove x8407  
Nicholas Coleman x8552  
Kathryn Habara x8555

### South San Francisco

229 Littlefield Avenue, #1  
p - 415.330.6600  
e - SSForders@siglers.com

Carlos Angel x8417  
Pete Martinez x8406  
Tricia Maychrowitz x8404  
Kai Sorensen x8415

### Technical Support

415.330.6666 (call or text)

## Featured Products

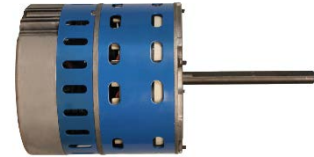


When it is 95° outside, a homeowner needs air conditioning. On those peak days, a Carrier system is the best way to keep everyone in the home cool and comfortable. However, what about those 80 degree days? Or warm days that are followed by a cool evening? Those are situations where a whole house fan shines and why QuietCool needs to be part of your selling process.

An added benefit that is especially important these days is the fan's ability to circulate air and introduce a large volume of fresh outside air into a home. When people are focused on keeping the air in their homes fresh and clean, nothing works better than Quiet Cool. Both PSC and ECM motor models are now available!



Sigler Wholesale Distributors now stocks the new Azure ECM direct drive replacement blower motor. This motor features Bluetooth control when using the ZSURE ECM smartphone app. While not required for the installation of these motors, the app allows the installer to take full advantage of the ECM technology.



Nearly a one-size-fits-all solution, this motor replaces 16 pin variable speed motors, many 4 pin variable speed motors and constant torque motors. It operates with four speeds plus a low 625 RPM constant fan mode.

Two high 85% efficiency models are available. Both are 115 or 230 volts and utilize a belly-band mount.

**10856 = ¼ to ½ HP**

**10857 = ½ to 1 HP**

## Technical Tips

### Q: What is the most accurate method to adjust refrigerant charge in a system?

Well, it all depends on if you fall within the "favorable charging conditions" range. This is when the outdoor temperature is between 65° and 100° and the indoor temperature is between 70° and 80°. If you're outside of these conditions, a full recovery of the refrigerant and weighing back in the correct amount is the only accurate way to confirm the charge is correct.

In the winter months, it may be helpful to use the Heating Check Chart inside the unit's electrical panel. This chart indicates whether the operating pressures are reasonable given the indoor and outdoor temperatures. Never use this chart to adjust charge.

When the temperatures at your job are within the "favorable" range, charging by subcool will allow you to accurately charge the system to factory specs. Subtract the actual liquid line temperature detected near the liquid service valve from your condenser saturation temperature. Using a clamp-on temperature tool to detect the temperature of the liquid line is the most acute method – never use an infrared temperature gun. Then, compare the subcooling value you have to the factory subcooling that is listed on the unit's nameplate or installation instructions. These values should be within 2° to 3° of each other for that system to operate properly.