

# TECHNICAL INFORMATION COMMUNICATION



**United  
Technologies**

Building & Industrial Systems

Quality and Continuous Improvement

**Number:** TIC2015-0014

**Date:** 8/4/2015

**Title:** Attaching Uncased Ceiling Fan Coils to Fiberboard Plenums

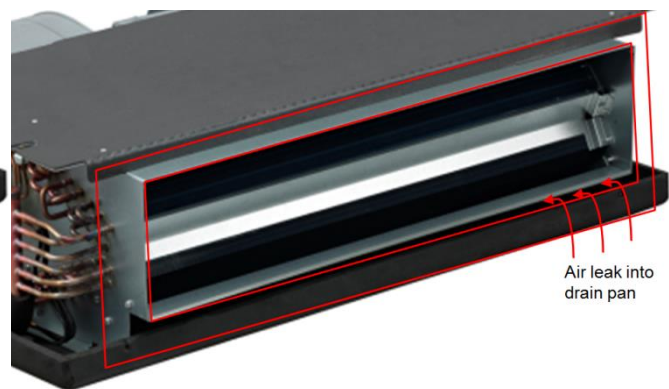
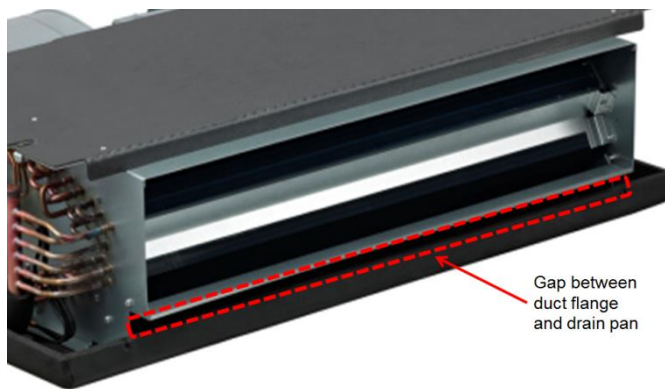
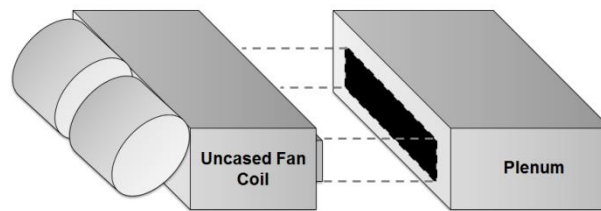
**Product Category:** Fan Coils

## Products Affected

### Uncased Horizontal (Pancake) Fan Coil Units

#### Situation

Fiberboard plenum field installation procedure can cause drain pan water leaks. When the field installed fiberboard plenum is not properly sealed to the supply air duct flange it will blow supply air back into the condensate drain pan pushing water out. This occurs when the plenum opening is not cut straight or is misaligned to the duct flange.



## Technical Information

The attached instructions give details on adding a 1 ½ X 1 ½ sheet metal angle to assist the installer with making a proper seal from the field supplied fiberboard plenum to the fan coil supply outlet.

Only trained and qualified personnel should design, install, repair and service HVAC systems and equipment. All national standards and safety codes must be followed when designing, installing, repairing and servicing HVAC systems and equipment. It is the responsibility of the Dealer to ensure local codes, standards, and ordinances are met.

# TECHNICAL INFORMATION COMMUNICATION



**United  
Technologies**

Building & Industrial Systems

Parts needed: Locally purchased 1 ½ X 1 ½ sheet metal angle and self-tapping screws.

1. Place the uncased fan coil with the ceiling mount side down and the drain pan on the top on a work bench suitable for handling the fan coil's weight. Fig. 1,2&3
2. Measure 6 3/8 inches and cut one side of the sheet metal angle. (The supply air side flange can also be used as a template to identify the place to cut the sheet metal angle.) Fig. 4,5&6
3. Bend the sheet metal angle around the corner and use self-tapping screws to attach to supply air flange. Repeat this process for the other side. Fig. 7 & 8
4. Make sure the sheet metal angle is in front of the drain pan. Fig. 9 & 10  
Turn fan coil back over with the ceiling mount side on top. Fig. 11
5. Continue with the normal field installation procedure for the fiberboard plenum.
6. Before bolting fan coil to ceiling check ceiling for slope in the direction of field supplied main drain line. Use shims to correct the slope if ceiling will cause pan to drain the wrong way.



Fig.1



Fig.2



Fig.3



Fig.4



Fig.5



Fig.6



Fig.7



Fig.8

Only trained and qualified personnel should design, install, repair and service HVAC systems and equipment. All national standards and safety codes must be followed when designing, installing, repairing and servicing HVAC systems and equipment. It is the responsibility of the Dealer to ensure local codes, standards, and ordinances are met.

# TECHNICAL INFORMATION COMMUNICATION



**United  
Technologies**

Building & Industrial Systems



Fig. 9



Fig.10

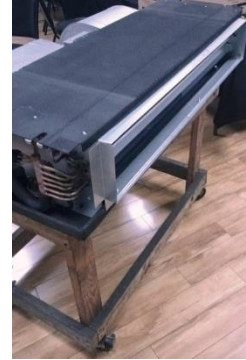


Fig.11

Only trained and qualified personnel should design, install, repair and service HVAC systems and equipment. All national standards and safety codes must be followed when designing, installing, repairing and servicing HVAC systems and equipment. It is the responsibility of the Dealer to ensure local codes, standards, and ordinances are met.