

# TECHNICAL INFORMATION COMMUNICATION



## Quality and Continuous Improvement

**Number:** TIC 2019-0012

**Date:** 6/24/2019

**Title:** Dual Inlet Backward Curve Fan Installation

**Product Category:** Residential Gas Furnaces

### Products Affected:

#### Models:

Carrier	Bryant	Payne
59SC5B040E141110	915SB30040E14A-A	PG95ESAA30040AAA
59SC5B060E141112	915SB36060E14A-A	PG95ESAA36060AAA
59TP6B040V141110	926TB30040E14A-A	PG96VTAA30040AAA
59TP6B060V141112	926TB36060E14A-A	PG96VTAA36060AAA

### Situation:

The above models, designed to meet federal Fan Energy Rating (FER) requirements, are scheduled to be released into production. These furnaces use a dual-inlet backward curve (DIBC) blower wheel. The installation of these wheels into the blower housing, and onto the motor shaft during service or replacement varies slightly from current standard field installation practices.

### Technical Information:

Today's standard installation practice for blower wheels includes visual positioning of the wheel on the motor shaft in a position that would be centered in the blower housing. For the new wheel and motor design, the installer, after completing installation of the motor to the housing, will slide the blower wheel to the stop mechanism designed into the flat of the motor shaft.

#### Installing the DIBC wheel:

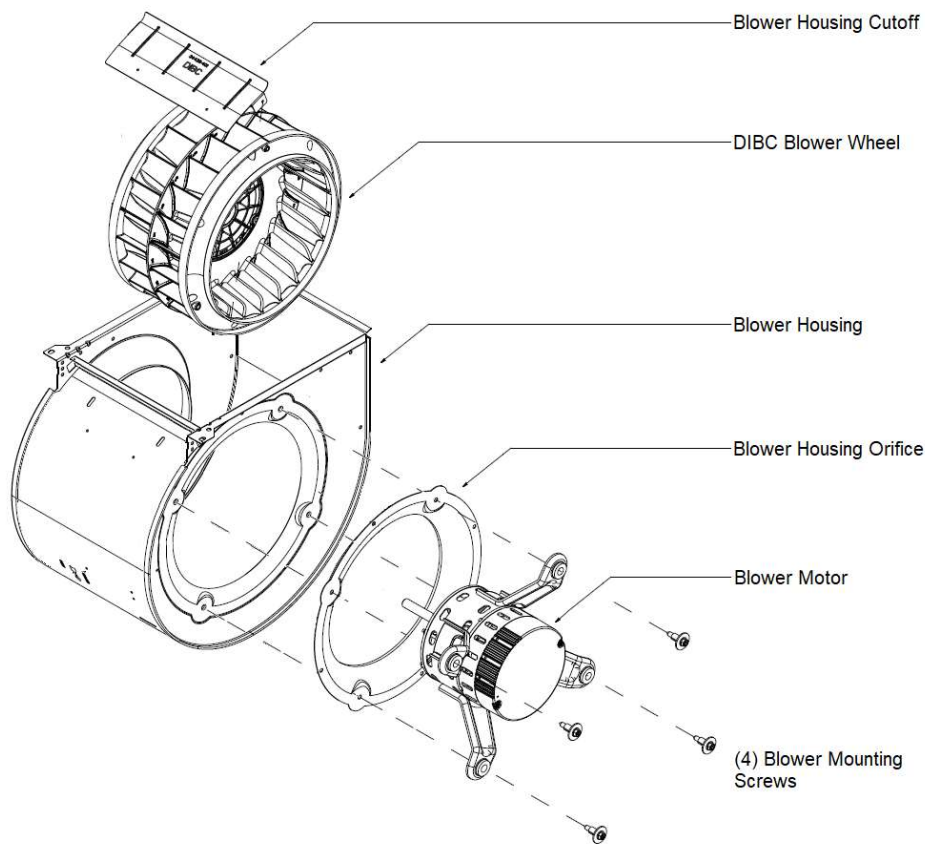
1. Lay blower housing on non-motor side
2. Insert DIBC wheel into blower housing
3. Place blower housing orifice onto blower housing, aligning motor mounting holes
4. Install motor shaft into hub of DIBC blower wheel

Only trained and qualified personnel should design, install, repair and service HVAC systems and equipment. All national standards and safety codes must be followed when designing, installing, repairing and servicing HVAC systems and equipment. It is the responsibility of the Dealer to ensure local codes, standards, and ordinances are met.

# TECHNICAL INFORMATION COMMUNICATION



5. Align motor mounting arms and install 4 motor mounting screws. Tighten motor mounting screws to 40 in-lb.
6. Upright blower housing assembly
7. Align set-screw with flat on motor shaft
8. Push blower wheel toward motor until wheel hub bottoms out on the motor shaft and tighten set-screw to 160 in-lb.
9. Spin blower wheel and check for interference. Adjust as needed.
10. Install blower cutoff in housing
11. Install green ground wire from motor harness to sheet metal of housing
12. Reinstall blower housing mounting brackets to blower housing and install into furnace



Only trained and qualified personnel should design, install, repair and service HVAC systems and equipment. All national standards and safety codes must be followed when designing, installing, repairing and servicing HVAC systems and equipment. It is the responsibility of the Dealer to ensure local codes, standards, and ordinances are met.